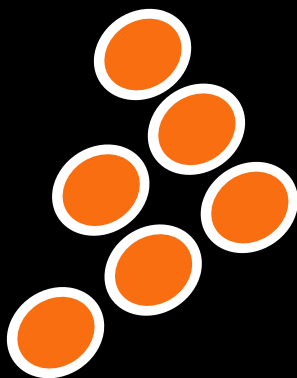




Quick Start Guide



Contents

| | | |
|----------|---|-----------|
| 1 | Installation | 4 |
| 1.1 | Windows | 4 |
| 1.2 | Mac OS X | 7 |
| 1.3 | Launching CROSS DJ | 7 |
| 1.4 | License Key | 7 |
| 2 | Configuring CROSS DJ | 8 |
| 2.1 | Audio Configuration | 8 |
| 2.2 | MIDI Configuration | 9 |
| 3 | Overview of the Graphical User Interface | 10 |
| 3.1 | Menu | 10 |
| 3.2 | Head-Up Display (HUD) | 10 |
| 3.3 | Players | 11 |
| 3.4 | Integrated Mixer | 12 |
| 3.5 | Dock | 13 |
| 3.6 | Browser | 13 |
| 3.7 | Preview Deck | 13 |
| 4 | Importing Audio | 14 |
| 4.1 | Importing Folders | 14 |
| 4.2 | iTunes® Integration | 14 |
| 5 | Loading Tracks | 15 |
| 6 | First Mix with CROSS DJ | 16 |
| 7 | Troubleshooting | 17 |



Welcome

Thank you for choosing CROSS DJ. This DJ software was designed to provide a simple and user-friendly environment, so you can focus on mixing tracks and having fun.

Take a few minutes to run through this quick start guide and you'll be on your way to making great mixes on CROSS DJ in no time at all!

We invite you be a part of the MixVibes community to share your experiences with other DJs, find help and advice, and check for available updates. See you online on the [forum](#)¹ or on the [website](#)²!

Minimum System Requirements for PC

- Windows XP SP2 or Windows Vista SP1 or Windows 7
- Pentium 4 / 2 GHz or equivalent
- 512 MB RAM (1 GB recommended)
- Hard drive space for music

Minimum System Requirements for MAC

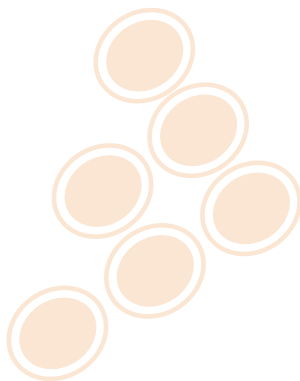
- Mac OS X 10.4
- Intel Core Duo / 1.83 GHz or higher
- 512 MB RAM (1 GB recommended)
- Hard drive space for music

Contents of the box

- CROSS DJ installation disc
- This quick start guide
- Keyboard stickers

¹<http://forum.mixvibes.com>

²<http://www.mixvibes.com>



1 Installation

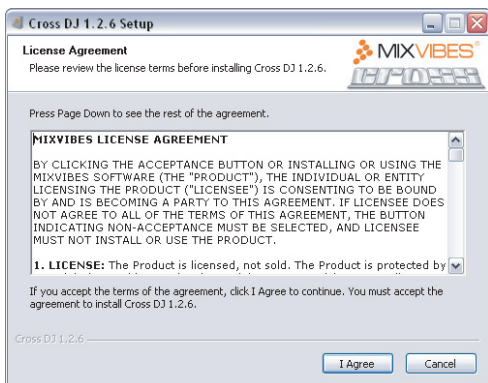
1.1 Windows

- 1 Insert CROSS DJ installation disc into your computer's CD-ROM drive. The installation program will launch automatically. In case it does not, open Windows Explorer, navigate to the CROSS DJ installation disc and double-click on the file «Install Cross DJ.exe».
- 2 Choose your language and click **OK**.



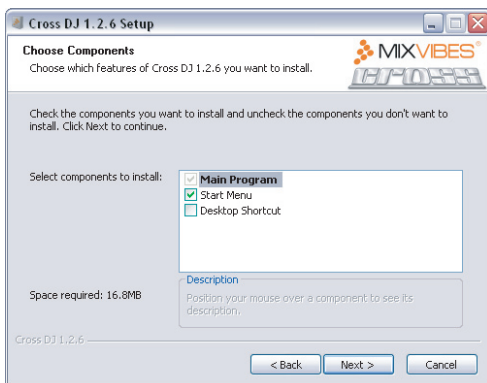
Language Selection

- 3 Read and accept the End-User License Agreement by clicking **I Agree**.



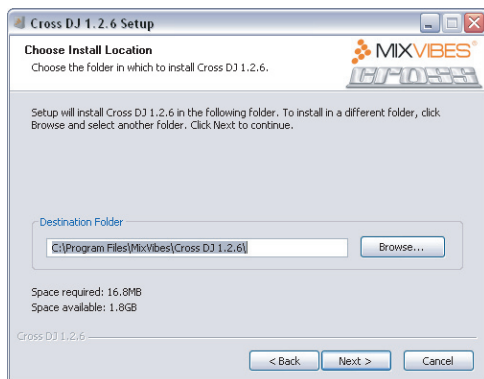
End-User License Agreement

- 4 Select the Components you want to install and click **Next**.



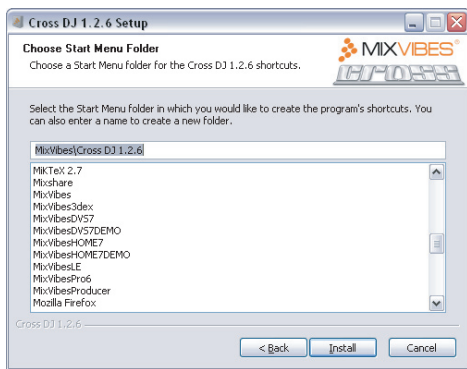
Components Selection

- 5 Choose the folder in which you want to install CROSS DJ and click **Next**.



Choose Install location

- 6 Choose the Start Menu folder in which you want to create the CROSS DJ shortcut. To start the installation, click **Install**.



Start Menu Folder Location

- 7 Once the installation is complete you can click **Finish**. If the check box **Run CROSS DJ** is selected, CROSS DJ will launch automatically.



Finish Installation

1.2 Mac OS X

- 1 Insert the CROSS DJ installation disc into your computer's CD-ROM drive.
- 2 Double-click the CROSS DJ icon on your desktop.
- 3 Drag and drop CROSS DJ into your Applications folder.



Installing CROSS DJ

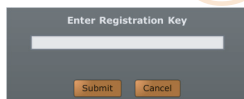
1.3 Launching CROSS DJ

Windows Go to [Start > All Programs > MixVibes > Cross DJ] and click on the CROSS DJ icon.

Mac OS X Go to [Applications > Cross DJ] and double-click on CROSS DJ.

1.4 License Key

Enter the License Key found on the sleeve of your installation disc and click **Submit**.

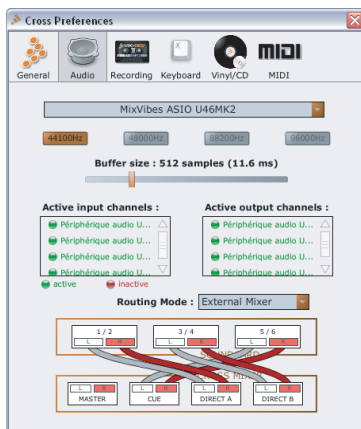


License key

2 Configuring CROSS Dj

2.1 Audio Configuration

- 1 Go to [File > Preferences > Audio].



Audio Configuration Pane

- 2 Select your **audio interface** from the pull down menu.
- 3 Choose your desired **sample rate** and **buffer size**. The default settings are 44.1kHz sample rate and 512 samples of buffer.
- 4 Activate the **inputs** and **outputs** of the audio interface by clicking on them. Red is disabled; Green is active.
- 5 Select your **routing mode**. If you are using an external mixer, select the routing mode External Mixer.

Here is a description of the different routing modes:

Simple Stereo The sum of the master and cue signals are routed to outputs 1/2 on your audio interface.

Dual Stereo The master signal is routed to outputs 1/2 and the cue signal is routed to outputs 3/4 on your audio interface.

Reversed Dual Stereo Same as Dual Stereo but with reversed routing.

Split Mono The master and cue signals are folded down to mono. The mono master is routed to output 1 and the mono cue is routed to output 2 on your audio interface.

External Mixer Deck A direct out is routed to outputs 1/2 on your audio interface, and Deck B direct out is routed to outputs 3/4. For audio interfaces with more than 4 outputs, the cue out is also routed to outputs 5/6.

Alternate Dual Stereo Same as Dual Stereo but with alternate routing for audio interfaces with more than 4 outputs.

2.2 MIDI Configuration

- 1 Go to [File > Preferences > MIDI].



MIDI Configuration Pane

- 2 Select your MIDI input device from the pull down menu.
- 3 Select your MIDI device mapping by clicking on its picture.

3 Overview of the Graphical User Interface

Once CROSS DJ is configured, you will see the following graphical interface:



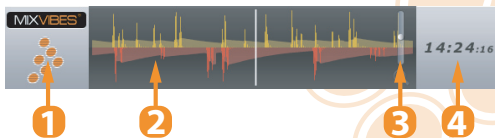
User Interface

3.1 Menu

The menu lets you access various commands in CROSS DJ.

3.2 Head-Up Display (HUD)

The Head-Up Display contains information essential to your mix:



Head-Up Display

- 1 CROSS logo.

- 2 The Beat Matcher display gives a visual representation of the synchronization between the players.
- 3 Zoom.
- 4 Clock.

3.3 Players

The Players control the various playback functions of an audio file.



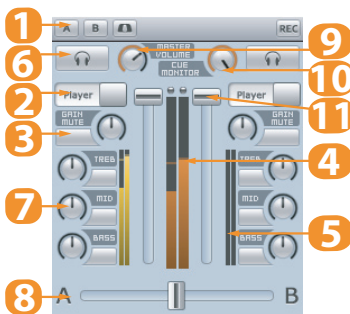
Player

- 1 Displays the Title, Artist and Duration of the audio file.
- 2 Mode selector for the pitch fader. Selects between Speed, Tempo, or Hybrid modes.
- 3 Pitch fader.
- 4 Full track display. Gives an overview of the waveform for the entire audio file. Clicking on the waveform to will jump to that point in the track.
- 5 Smart Loop.
- 6 Manual loop.
- 7 Match the speed or tempo of the other deck.
- 8 Sync to the nearest down-beat of the other deck.

- Reverse the playback direction.
- Pitch range selector. Set the range of the pitch fader up to +/- 100%.
- Set locators for seamless cue points.
- Play/Pause and Cue.

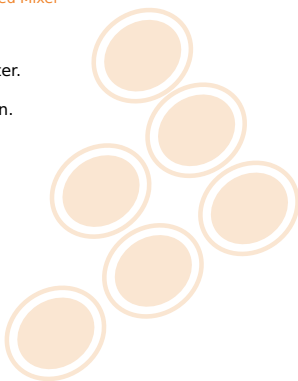
3.4 Integrated Mixer

When in External Mixer routing mode, only functions 1-6 will be available.



Integrated Mixer

- Record selectors: A, B and Master.
- Input Selectors: Player or Line In.
- Gain.
- Output meter.
- Input meters.
- Pre Fader Listen.
- EQ.
- Crossfader.
- Master Level.



10 Cue Level.

11 Channel faders.

3.5 Dock

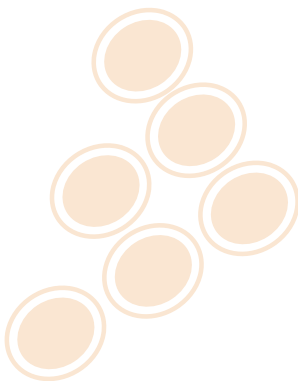
The dock is the central component of CROSS DJ' media management system. It hosts multiple tabs which can be un-docked to view two or more lists at the same time. To un-dock a tab, click on the arrow to the right of the tab icon.

3.6 Browser

The browser displays the track information in list view and enables you to scroll through your collection and load tracks into the players.

3.7 Preview Deck

The preview deck enables you to quickly preview and select tracks in the headphones without loading them into a player. When in Play mode the preview deck will play the track currently selected in the browser.

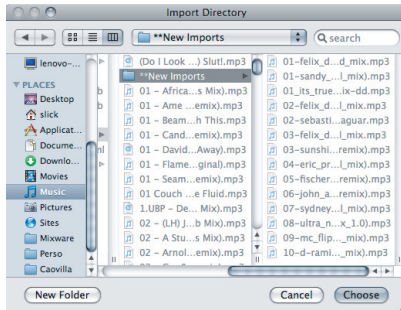


4 Importing Audio

4.1 Importing Folders

To import an entire folder of music:

- 1 Go to [File > Import > Directory]
- 2 Choose a folder or disc containing your music and click **Choose**.
- 3 CROSS DJ will import all the audio tracks into the Collection.



Locating a Folder

You can also import files by going to [File > Import > Media] or playlists by going to [File > Import > Playlist].

4.2 iTunes® Integration

If you use Apple's iTunes® software to manage your track collection, you can access your iTunes® Library and playlists by clicking on the iTunes® tab in the Dock.

To import tracks from iTunes®:

- 1 While viewing your collection, un-dock the iTunes® tab.
- 2 Select the tracks you want to import.
- 3 Drag and drop your selection into the collection window or right-click (CTRL+click on Mac) and choose **Add to Collection**.

5 Loading Tracks

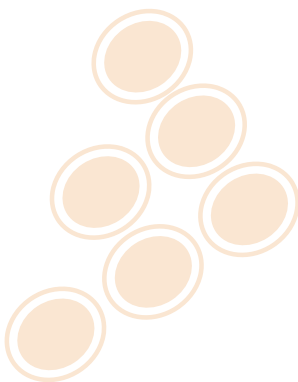
After importing your audio tracks you can load them into the players. There are two ways of loading tracks:

With the mouse

- Drag and drop a track from the collection to one of the players.
- Right-click (CTRL+click on Mac) and select **Load in Player A, B** or **Active**.

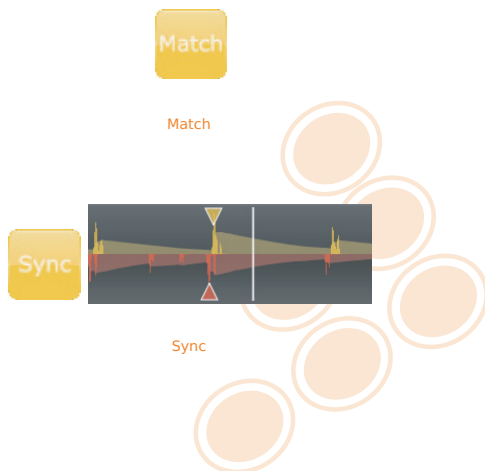
With the keyboard

Use the up and down arrow keys to scroll through your collection. Load the highlighted track into one of the players by using the Load shortcut (Configure your shortcuts in [File > Preferences > Keyboard > Media Rack]).



6 First Mix with CROSS DJ

- 1 Load tracks into both players and the waveforms will appear.
- 2 Start playback of the audio in the players.
- 3 You should now hear the music in your speakers: You can start mixing.
- 4 To go from one track to another, move the crossfader from left to right, or use the channels faders on your external mixer (or the CROSS DJ mixer if you are not in External Mixer routing mode).
- 5 To pre-listen to tracks, use the cue section of your external mixer (or the CROSS DJ mixer if you are not in External Mixer routing mode).
- 6 The two audio tracks are most likely not at the same tempo. You need to match the tempo of both tracks, and synchronize one player with the other by:
 - adjusting the pitch via the pitch faders. Use the Beat Matcher in the Head-Up Display as visual indicator.
 - using the Match and Sync buttons to automatically perform those two tasks. Pressing the Match button will match the tempo of the other player, while Sync will adjust the playback position to match the downbeat of the other player.



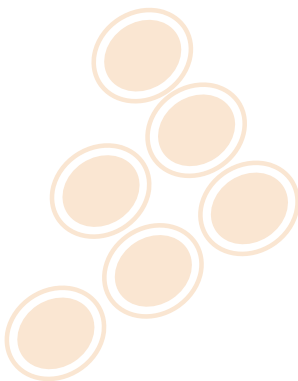
7 Troubleshooting

The audio tracks are not playing back

- Make sure you selected the correct audio interface in the audio preferences window.
- Make sure you activated the correct outputs of your audio interface in the audio preferences window.
- Make sure you selected the correct Routing Mode in the audio preferences window.

There is no sound from speakers

- Check for activity on the output meter of the internal mixer. If there is no response from the meter, check all the controls of the mixer: faders, gain, kills, etc.
- If you are in external mixer mode, check your connections from your audio interface to your mixer and from your mixer to your sound system. Make sure you have the proper inputs selected on your mixer.



Contact

- For all technical or sales information, please contact your local reseller or MixVibes directly:

MixVibes

4, rue de la Sablière

92230 Gennevilliers

FRANCE

www.mixvibes.com

- Technical support:
 - online on our [forum](http://forum.mixvibes.com)¹
- Sales Information:
 - by email to sales@mixvibes.com

Copyright 2009 MixVibes. All rights reserved.

The contents of this guide may change without prior notice. Best efforts have been put forth to insure the accuracy of the contents of this guide. MixVibes is not liable for any errors, typographical or other, contained herein. Except as specifically permitted herein, no portion of the information on this guide may be reproduced in any form or by any means without the prior written permission of MixVibes. Trademarks and trade names displayed on this guide are the property of their respective owners.

This guide may be updated from time to time. Please check for updates on our [website](http://www.mixvibes.com)².

¹<http://forum.mixvibes.com>

²<http://www.mixvibes.com>