

Jim Scott

Rock Drums



BFD2
COMPATIBLE

Platinum Samples
Master Engineer Series

BFD2 Compatible Expansion Pack

Jim Scott Rock Drums

Welcome and thank you for purchasing Jim Scott's Rock Drums! We hope you enjoy working with it as much as we do. Please read through this manual carefully. The installation process and the Hit types used in this expansion pack differ from previous products in the FXpansion BFD2 range. Reading through this manual will ensure that you get the most out of the sounds.

The data on the Rock Drums DVDs is compressed (using a zero-loss algorithm), to facilitate the delivery of the highest possible level of detail.

BFD2 version 2.1 or later is required in order to use Rock Drums. Please make sure it is properly installed before you proceed.

Installation

Each DVD contains an installer specific to the contents of that DVD. Please follow these steps for *each DVD*!

Special note for Mac users: during the installation routine, you will be asked for your Admin password. You must have Admin rights in order to install this software.

1. Insert the DVD and run the Rock Drums installer.
 - Windows:
Explore the DVD contents in My Computer and double-click **Jim Scott Rock Drums Installer WIN.exe** to run it.
 - Mac:
Open the DVD contents and double click **Jim Scott Rock Drums Installer OSX** to run it.
2. Follow the on-screen instructions until the 'Installation Path' stage appears.

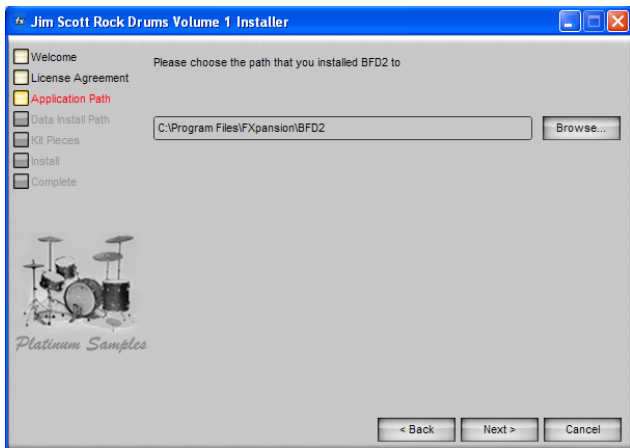
3. (Windows Only - Mac users skip this step)

Specify the location where you installed the BFD2 application files on your system.

If this differs from the default shown, click **Browse** to locate and select your custom BFD2 installation path.

You **must** select the correct location, or your expansion pack will not work in BFD2.

Click **Next** when you're ready to proceed.



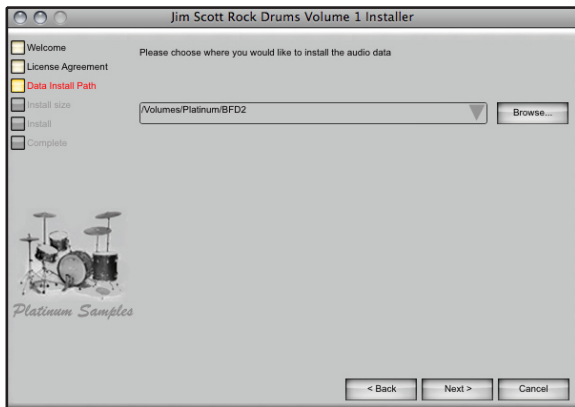
4. Specify any folder on a suitable hard disk in which to install the audio data.

The drop-down menu contains all current BFD2 data paths. Select one of these or click Browse to navigate to and select a new location.

If you select a new location, it is added to the BFD2's list of data paths automatically.

The data paths are scanned for new files next time you start BFD2.

Click **Next** to proceed.



- Specify the detail level at which to install the contained kit-pieces. This determines the maximum number of velocity layers (and the required hard disk space) for each kit-piece in the installer package.

Higher detail levels have a higher impact on system resources.

Small:	a maximum of 20 velocity layers will be installed
Medium:	a maximum of 40 velocity layers will be installed
Large:	a maximum of 128 velocity layers will be installed
SuperSize:	a maximum of 256 velocity layers will be installed

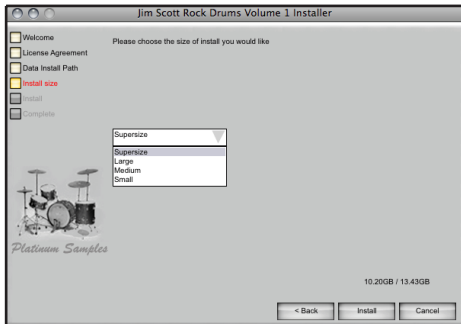
NOTE: Installing SuperSize will require more disk space - To use the extra velocity layers please read "New expressive possibilities" on page 8 of this manual

After specifying the detail level, click **Install** to proceed with the installation.

- The installation process itself can take a while. The current status is indicated by the progress bar.
- When the installation is complete, click **Done** to close the installer application.

Repeat steps 1 to 7 for each DVD. Please note if you don't install all the DVD's, the contents of the Expansion Pack and its associated presets may not load correctly in BFD2.

- Once all DVD's have been installed, you are ready to authorize your new kit-pieces.



Authorizing your expansion pack

In order to use the expansion pack sounds in BFD2, the product must first be authorized using the FXpansion License Manager. Its data must exist within one of the data paths set up in the BFD2 preferences in order for it to be scanned, authorized and added to the BFD2 database.

Proceed as follows:

1. Launch an instance of BFD2 in standalone mode, or as a plugin in a host.
2. The expansion pack should be detected and scanned automatically.
If this does not occur, go to the BFD2 Data Preferences and make sure the expansion pack's data path exists in the list (add it if necessary) and click the 'Scan data paths for new files' button.
3. The FXpansion License Manager should now launch automatically.
Authorize the new expansion pack(s) in the License Manager the same way you authorized BFD2 and any other expansion packs you own.
Please consult the BFD2 QuickStart Guide for a full guide to using the License Manager in order to authorize a product.

During authorization, your new expansion pack will be registered at Platinum Samples automatically with the same email address you use in License Manager to authorize the pack.

You MUST be registered to receive support. Registering also means we have a record of your serial if you lose it. Lost serials will NOT be replaced!

Registering also allows you access to the download area, containing free bonus content such as additional Kit-Pieces.

Jim Scott

Some highlights from Jim's career include:

- › Tom Petty - Wildflowers
- › Wilco - Wilco (The Album)
- › Red Hot Chili Peppers - Californication
- › Sting - The Dream of the Blue Turtles
- › Johnny Cash - American Recordings
- › The Dixie Chicks - Taking the Long Way
- › The Foo Fighters - One By One
- › John Fogerty - Revival
- › Natalie Merchant - Ophelia
- › The Rolling Stones - Bridges to Babylon
- › Whiskeytown - Strangers Almanac
- › Lucinda Williams - Car Wheels on a Gravel Road

for additional credits please visit the [Platinum Samples website](#).

Notes from Jim

In my professional not so distant past (I started my career in 1979) there were only 24 tracks available on which to record your whole song. 48 tracks might have been attained if you could afford a second 24 track tape recorder and a synchronizer, and happened to be in a recording studio that had enough console to monitor everything. In those days I recorded the drums on either 2, 4, or 6 tracks depending on the complexity of the song. For many years I recorded the drums on 4 tracks... kick, snare, and drums left and right, combining the toms, overheads, hat, rooms, etc into that balance. You had to plan ahead. You could run out of tracks quickly if you didn't have a vision of where the song would end up. Decisions had to be made, tracks had to be comped, outtakes had to be erased. It was fun. It was rock and roll.

Times have changed. With computers there are unlimited tracks. Subsequently I have changed my approach. I now routinely record the drums on 11 or 12 tracks... basically the same ones you get in this sample pack. Left on my own, I always combine the kick mics (in and out) on to 1 track. I do the same with the snare, top and bottom mics get combined. However, on this drum pack, the snare top and bottom mics are left separate [on 2 of the kits], because I was asked to do so. The luxury of computers is that I get to record the toms, hats, ride, overheads, rooms, and compression tracks separately. I'm not sure it makes the music any better... but it does take the pressure off a bit.

Just as a matter of comparison and rock trivia, you should know that the drums on Tom Petty's "American Girl" are recorded on 1 track. The drums on the entire "Layla" album are on 2 tracks, and the drums on the entire Beatles catalog are undoubtedly recorded on 1 or 2 tracks... often with the bass, or guitar or piano on the same track at the same time. My point is if you play something great, it will sound great... no matter how many tracks you have.

I hope you enjoy my drum samples and the balance as it comes to you... but feel free to experiment. I just humbly suggest that you don't let the drums get in the way of the song... and don't forget to practice!!!

Thanks, peace

Jim Scott

Recording notes

Rock Drums Kits 1 through 6 were recorded at Jim's PLYRZ Studios, Kits 7 & 8 were recorded at Sound City Studios. Jim used the studios' classic Neve consoles and his own collection of outboard gear to sculpt his sounds. To accommodate the way Jim records and to keep things phase accurate, the BFD2 drums are set up as follows:

Kick In and Kick Out were recorded as a mono track and multed to a single track.

Cymbals 1 & 2 are the same as the Overheads right and left respectively as viewed from audience perspective (please see the panning notes on page 13).

- **Direct**

Kick In & Out:	Sennheiser 421, Neumann 47 FET
Snare Top:	Shure SM57
Snare Bottom:	Shure SM57
HiHat:	Shure SM57
Toms:	Sennheiser 421
Ride:	Electro Voice EV635A
Cowbell:	Shure SM7A

- **Overheads**

Pair of AKG C12's

- **Room**

Pair of Neumann u87's (Sound City), Pair of RCA 44's (PLYRZ)

- **Mono Room**

Neumann m49 tube

- **Far Room (Amb3)** - [Kits 7 & 8 only]

Pair of Neumann u87's

More details and pictures are available on the Platinum Samples web site.

Using the new sounds in BFD2

Kits and Kit-Pieces

All Kit-Pieces on all DVDs must be installed in order to use the ready-made Kits. If you're only installing a selection of Kit-Pieces, you need to compile your own Kits from the installed Kit-Pieces, something which takes a matter of seconds in BFD2.

A note about the new articulations

BFD 2.1 allows flexibility in articulations, so some kit-pieces in Rock Drums have Special Artics - please consult the Kit-Piece listing in this manual, or the Artic List in BFD2, for details of each Kit-Piece's articulations.

New expressive possibilities

Rock Drums features detail levels much higher than the original BFD2 library. With a SuperSize installation, there are over 200 velocity layers for some hits. To access the higher velocity layers change the *Max layers* setting in the BFD2 Engine preferences.

WARNING!! Using velocity layers above 128 may severely overtax your system especially if you're running any other soft synths with BFD2.

Increased RAM overhead

The increased levels of detail in the new sounds cause a significantly higher RAM overhead compared to the content in the original BFD2 library. When using smaller amounts of RAM (768MB to 1GB), you should install Rock Drums with Small or Medium detail levels (see Installation guide for details), or consult the Performance Tips section in the BFD2 FAQ for other ways to optimize BFD2 for lower memory usage at the FXpansion web site. The new BFD 2.1 “Load On Demand” feature is an excellent method to reduce RAM overhead.

Using the Jim Scott Rock Drums

The Platinum Samples Expansion Packs are Engineered Drums for BFD2 - meaning the drums were recorded like they would be on a recording session. They were meticulously tuned and EQ'd by a master craftsman. The result is an expansion pack which sounds great as soon as you load a kit.

We suggest you load one of the JSD BFD2 presets. This will give you a balance for the drum kits as Jim would mix them.

The Kick

Unlike other Expansion packs, the kick drum was multed to a single track - this is the way Jim records his kick and it ensures that you have the correct blend between inside and outside mics.

The Rooms

The Rock Drums expansion pack was recorded at Jim's own PLYRZ Studio and Sound City Studios. The dimensions of the largest room is 40 x 50 feet with a 25 foot high ceiling. Part of the rooms' character is the delay time to the room mics. To preserve the room sound the delay to the room mics was not adjusted. If the room channels are pushed up very high, the slap in the room will be audible.

The Stereo Room

Jim records his drums from the audience perspective, so by default the Room Left is aimed towards the Ride side of the drum kit and the Room Right is aimed towards the Hat side of the drum kit.

The Amb3 Channel

The Amb3 channel is a Stereo Far Room on Kit 7 & 8.

The Overheads and the Cymbals

To minimize phase issues and redundant mics, the left overhead is a mult of the Cymbal 1 track, similarly the right overhead is a mult of the Crash 1 track to match existing BFD2 data. Jim records his drums from the audience perspective, so Crash 1 would be panned to the right (Hat side) and Cymbal 1 (Crash 2) would be panned to the left (Ride side).



The Toms

There are 4 kits recorded with only 2 Toms (Floor, Hi). When loading these kits' presets BFD2 will automatically place a duplicate of the Hi Tom into the Mid Tom position and detune it.

The Kick & Snare Crush

The Kick and Snare 'Crush' tracks are highly compressed tracks which can be used with the main Kick & Snare tracks to add punch and to keep the level of the drum uniform. If you're playing an electronic drumkit you may prefer to lower these while playing since they will reduce dynamics.

The Brush Snare

Because BFD2 automatically mutes snare artic if another snare artic is played - to avoid the snare swirl artic being muted by snare hit artic, you should load the same snare into 2 different snare slots in BFD2.

John Emrich (www.johnemrich.com) has posted a YouTube video which demonstrates this and the JSD Kit 2 Brush preset also demonstrates this method.

YouTube link: http://www.youtube.com/watch?v=wh_M01ZV09M

JSD Kit # 2 Sticks

• Ludwig Blue Sparkle
JSD Kit 2 Sticks/Kick

Size: 585 MB

Manufacturer: Ludwig

Size: 14x22"

Model: Blue Sparkle

Beater: Felt

Date: Sept. 1966

Heads:

Beater: REMO Coated Ambassador

Front: REMO Coated Ambassador

Hit

• Ludwig Blue Sparkle (w/ Resonator)
JSD Kit 2 Sticks/Res Kick

Size: 841 MB

Manufacturer: Ludwig

Size: 14x22"

Model: Blue Sparkle

Beater: Felt

Date: Sept. 1966

Beater: REMO Coated Ambassador

Front: REMO Coated Ambassador

Hit

• Ludwig Supraphonic Chrome
JSD Kit 2 Sticks/Snare

Size: 2772 MB

Manufacturer: Ludwig

Size: 5x14"

Model: Supraphonic

Materials: Chrome

Top Head : REMO Coated Ambassador

Hit, Rim, Flam, Drag, HalfEdge, SS

• Ludwig Blue Sparkle
JSD Kit 2 Sticks/Tom Hi

Size: 518 MB

Manufacturer: Ludwig

Size: 8x12"

Model: Blue Sparkle

Materials: Maple

Date: Sept. 1966

Top Head : REMO Coated Ambassador

Bottom Head: REMO Clear Ambassador

Hit

• Ludwig Blue Sparkle
JSD Kit 2 Sticks/Tom Mid

Size: 484 MB

Manufacturer: Ludwig

Size: 9x13"

Model: Blue Sparkle

Materials: Maple

Date: Sept. 1966

Top Head : REMO Coated Ambassador

Bottom Head: REMO Clear Ambassador

Hit

• Ludwig Blue Sparkle
JSD Kit 2 Sticks/Tom Floor

Size: 802 MB

Manufacturer: Ludwig

Size: 16x16"

Model: Blue Sparkle

Materials: Maple

Date: Sept. 1966

Top Head : REMO Coated Ambassador

Bottom Head: REMO Clear Ambassador

Hit

- Vibra Cymbal Italy
JSD Kit 2 Sticks/Hihat

Size: 2921 MB

Manufacturer: Vibra Cymbal Italy
Size: 14"

Closed (*tip + shank*)
Quarter (*tip + shank*)
Half (*tip + shank*)
ThreeQ (*tip + shank*)
Open (*tip + shank*)
Pedal

- Vibra Italy 21" Ride
JSD Kit 2 Sticks/Ride1

Size: 878 MB

Manufacturer: Vibra Cymbal Italy
Size: 21"

Hit, Bell

- Zildjian 18" Crash
JSD Kit 2 Sticks/Crash 1

Size: 556 MB

Manufacturer: Zildjian
Size: 18"

Hit

- Zildjian 20" Crash
JSD Kit 2 Sticks/Crash 2

Size: 523 MB

Manufacturer: Zildjian
Size: 20"

Hit

- Cowbell
JSD Kit 2 Sticks/Cowbell

Size: 132 MB

Manufacturer: Ludwig

Hit, Rattle

JSD Kit # 4 Sticks

- Kent Orange Sparkle
JSD Kit 4 Sticks/Kick
Size: 806 MB
Manufacturer: Kent
Size: 14x22"
Model: Orange Sparkle
Materials: 2-ply Maple (Bird's Eye)
Beater: Felt
Date: circa 1950's
Heads:
Beater: REMO Coated Ambassador
Front: REMO Coated Ambassador w/ hole

Hit

- Kent Orange Sparkle
JSD Kit 4 Sticks/Snare 1
Size: 2962 MB
Manufacturer: Kent
Size: 5x14"
Model: Orange Sparkle
Materials: 2-ply Maple (Bird's Eye)
Date: circa 1950's
Drum Head: REMO Coated Ambassador

Hit, Rim, HalfEdge, Flam, Drag, SS

- Kent Orange Sparkle
JSD Kit 4 Sticks/Tom Hi
Size: 478 MB
Manufacturer: Kent
Size: 9x13"
Model: Orange Sparkle
Materials: 2-ply Maple (Bird's Eye)
Date: circa 1950's
Top Head : REMO Coated Ambassador
Bottom Head: REMO Clear Ambassador

Hit

- Kent Orange Sparkle
JSD Kit 4 Sticks/Tom Floor

Size: 478 MB

Manufacturer: Kent

Size: 14x14"

Model: Orange Sparkle

Materials: 2-ply Maple (Bird's Eye)

Date: circa 1950's

Top Head : REMO Coated Ambassador

Bottom Head: REMO Clear Ambassador

Hit

- Zildjian Series-A Custom 16" Crash
JSD Kit 4 Sticks/Crash 1

Size: 535 MB

Manufacturer: Zildjian

Size: 16"

Model: Series-A Custom Crash

Hit

- Zildjian Series-A 20" Crash
JSD Kit 4 Sticks/Crash 2

Size: 644 MB

Manufacturer: Zildjian

Size: 20"

Model: Series-A Crash

Hit

- Zildjian 15" Hihat
JSD Kit 4 Sticks/Hihat

Size: 4806 MB

Manufacturer: Zildjian

Size: 15"

Closed (tip + shank)

Quarter (tip + shank)

Half (tip + shank)

ThreeQ (tip + shank)

Open (tip + shank)

Pedal

JSD Kit # 7

- Gretsch USA Custom Satin Ebony

JSD Kit 7/Kick

Size: 792 MB

Manufacturer: Gretsch

Size: 18x22"

Model: USA Custom Satin Ebony

Materials: Maple

Beater: Felt, DW 9000 Pedal

Date: circa 2004

Heads:

Beater: REMO Clear Power Stroke 3

Front: REMO Ebony w/ 5.5" hole @ 9 o'clock

Hit

- Tama Bell Brass

JSD Kit 7/Snare

Size: 3068 MB

Manufacturer: Tama

Size: 6.5x14"

Model: Bell Brass

Materials: Brass, 42 strand snare

Top Head : REMO CS Black Dot

Bottom Head: REMO Snare Ambassador

Hit, Rim, Drag, HalfEdge, SS

- Gretsch USA Custom Satin Ebony

JSD Kit 7/Tom Hi

Size: 873 MB

Manufacturer: Gretsch

Size: 9x12"

Model: USA Custom Satin Ebony

Materials: Maple

Date: circa 2004

Top Head : REMO Coated Ambassador

Bottom Head: REMO Clear Ambassador

Hit, Rim Click

• Gretsch USA Custom Satin Ebony
JSD Kit 7/Tom Mid
Size: 1159 MB
Manufacturer: Gretsch
Size: 12x14"
Model: USA Custom Satin Ebony
Materials: Maple
Date: circa 2004
Top Head : REMO Coated Ambassador
Bottom Head: REMO Clear Ambassador

Hit, Rim Click

• Gretsch USA Custom Satin Ebony
JSD Kit 7/Tom Floor
Size: 1440 MB
Manufacturer: Gretsch
Size: 14x16"
Model: USA Custom Satin Ebony
Materials: Maple
Date: circa 2004
Top Head : REMO Coated Ambassador
Bottom Head: REMO Clear Ambassador

Hit, Rim Click

• Paiste 20" Dark Full Ride
JSD Kit 7/Ride 1
Size: 2565 MB
Manufacturer: Paiste
Size: 20"
Model: Dark Full Ride

Hit, Bell, Edge

• Zildjian K 18" Custom Session Crash
JSD Kit 7/Crash 1
Size: 1740 MB
Manufacturer: Zildjian
Size: 18"
Model: K Custom Session Crash

Hit, Bell

• Zildjian K 19" Dark Thin Crash
JSD Kit 7/Crash 2
Size: 1551 MB
Manufacturer: Zildjian
Size: 19"
Model: K Dark Thin Crash

Hit, Bell

DVD4

JSD Kit # 8

• Gretsch Metallic Green Steve Ferrone Sig. Model
JSD Kit 8/Kick
Size: 633 MB
Manufacturer: Gretsch
Size: 14x22"
Model: Steve Ferrone Signature Model
Materials: Maple
Beater: Felt
Date: circa 2007
Heads:
Beater: REMO Clear Power Stroke 3
Front: Coated Gretsch Logo w/ hole

Hit

• Ludwig 1920's Black Beauty
JSD Kit 7/Snare
Size: 2874 MB
Manufacturer: Ludwig
Size: 6.5x14"
Model: Black Beauty
Top Head : REMO Coated Ambassador

Hit, Rim, Drag, HalfEdge, SS

• Gretsch Metallic Green Steve Ferrone Sig. Model

JSD Kit 8/Tom Hi

Size: 680 MB

Manufacturer: Gretsch

Size: 8x10"

Model: Steve Ferrone Signature Model

Materials: Maple

Date: circa 2007

Top Head : REMO Coated Ambassador

Bottom Head: REMO Clear Ambassador

Hit

• Gretsch Metallic Green Steve Ferrone Sig. Model

JSD Kit 8/Tom Mid

Size: 792 MB

Manufacturer: Gretsch

Size: 8x12"

Model: Steve Ferrone Signature Model

Materials: Maple

Date: circa 2007

Top Head : REMO Coated Ambassador

Bottom Head: REMO Clear Ambassador

Hit

• Gretsch Metallic Green Steve Ferrone Sig. Model

JSD Kit 8/Tom Floor 1

Size: 917 MB

Manufacturer: Gretsch

Size: 14x14"

Model: Steve Ferrone Signature Model

Materials: Maple

Date: circa 2007

Top Head : REMO Coated Ambassador

Bottom Head: REMO Clear Ambassador

Hit

• Gretsch Metallic Green Steve Ferrone Sig. Model

JSD Kit 8/Tom Floor 2

Size: 956 MB

Manufacturer: Gretsch

Size: 14x16"

Model: Steve Ferrone Signature Model

Materials: Maple

Date: circa 2007

Top Head : REMO Coated Ambassador

Bottom Head: REMO Clear Ambassador

Hit

• Sabian Hand Hammered HH Raw Dry Ride

JSD Kit 8/Ride

Size: 2759 MB

Manufacturer: Sabian

Size: 21"

Model: Hand Hammered HH Raw Dry Ride

Hit, Bell

• Sabian Hand Hammered Medium Thin Crash

JSD Kit 8/Crash 1

Size: 1583 MB

Manufacturer: Sabian

Size: 16"

Model: Hand Hammered Medium Thin Crash

Hit, Butt

• Sabian Hand Hammered HH Thin Crash

JSD Kit 8/Crash 2

Size: 884 MB

Manufacturer: Sabian

Size: 18"

Model: Hand Hammered HH Thin Crash

Hit

• Sabian Custom AAX 18" with rivets

JSD Kit 8/Crash 3

Size: 959 MB

Manufacturer: Sabian

Size: 21"

Model: Custom AAX with rivets

Hit

DVD5

JSD Kit # 2 Brushes

• Ludwig Supraphonic Chrome

JSD Kit 2 Brushes/Snare

Size: 468 MB

Manufacturer: Ludwig

Size: 5x14"

Model: Supraphonic

Materials: Chrome

Top Head : REMO Coated Ambassador

Bottom Head:

Hit, Muted Hit, Endless Sweep, Quick Sweep

• Ludwig Blue Sparkle

JSD Kit 2 Brushes/Tom Hi

Size: 431 MB

Manufacturer: Ludwig

Size: 8x12"

Model: Blue Sparkle

Materials: Maple

Date: Sept. 1966

Top Head : REMO Coated Ambassador

Bottom Head: REMO Clear Ambassador

Hit

• Ludwig Blue Sparkle

JSD Kit 2 Brushes/Tom Mid

Size: 516 MB

Manufacturer: Ludwig

Size: 9x13"

Model: Blue Sparkle

Materials: Maple

Date: Sept. 1966

Top Head : REMO Coated Ambassador

Bottom Head: REMO Clear Ambassador

Hit

• Ludwig Blue Sparkle

JSD Kit 2 Brushes/Tom Floor

Size: 591 MB

Manufacturer: Ludwig

Size: 16x16"

Model: Blue Sparkle

Materials: Maple

Date: Sept. 1966

Top Head : REMO Coated Ambassador

Bottom Head: REMO Clear Ambassador

Hit

• Vibra Cymbal Italy

JSD Kit 2 Brushes/Hihat

Size: 1507 MB

Manufacturer: Vibra Cymbal Italy

Size: 14"

Closed

Quarter

Half

ThreeQ

Open

Pedal

• Vibra Italy 21" Ride

JSD Kit 2 Brushes/Ride1

Size: 346 MB

Manufacturer: Vibra Cymbal Italy

Size: 21"

Hit

- Zildjian 18" Crash
JSD Kit 2 Brushes/Crash 1
Size: 526 MB
Manufacturer: Zildjian
Size: 18"

Hit

- Zildjian 20" Crash
JSD Kit 2 Brushes/Crash 2
Size: 375 MB
Manufacturer: Zildjian
Size: 20"

Hit

- Cowbell
JSD Kit 2 Brushes/Cowbell
Size: 95 MB
Manufacturer: Ludwig

Hit**JSD Kit # 7**

- Zildjian China
JSD Kit 7/China
Size: 1125 MB
Manufacturer: Zildjian
Model: China

Hit

- Zildjian 14" Hihat
JSD Kit 4 Sticks/Hihat
Size: 6207 MB
Manufacturer: Zildjian
Size: 14"
Model: Mastersound Hihat

Closed (tip + shank)
Quarter (tip + shank)
Half (tip + shank)
ThreeQ (tip + shank)
Open (tip + shank)
Pedal

JSD Kit # 4 Blast Sticks

- Tama Bell Brass
JSD Kit 4 Blast Sticks/Snare Brass Bell
Size: 755 MB
Manufacturer: Tama
Size: 6.5x14"
Model: Bell Brass
Materials: Brass
Top Head : REMO CS Black Dot
Bottom Head: REMO Clear Snare Side Ambassador

Hit, Rim, Drag

- Kent Orange Sparkle
JSD Kit 4 Blast Sticks/Tom Hi
Size: 282 MB
Manufacturer: Kent
Size: 9x13"
Model: Orange Sparkle
Materials: 2-ply Maple (Bird's Eye)
Date: circa 1950's
Top Head : REMO Coated Ambassador
Bottom Head: REMO Clear Ambassador

Hit

- Kent Orange Sparkle
JSD Kit 4 Blast Sticks/Tom Floor
Size: 383 MB
Manufacturer: Kent
Size: 14x14"
Model: Orange Sparkle
Materials: 2-ply Maple (Bird's Eye)
Date: circa 1950's
Top Head : REMO Coated Ambassador
Bottom Head: REMO Clear Ambassador

Hit

• Zildjian Series-A Custom 16" Crash

JSD Kit 4 Sticks/Crash 1

Size: 520 MB

Manufacturer: Zildjian

Size: 16"

Model: Series-A Custom Crash

Hit

Zildjian Series-A 20" Crash

JSD Kit 4 Sticks/Crash 2

Size: 564 MB

Manufacturer: Zildjian

Size: 20"

Model: Series-A Crash

Hit

• Zildjian 15" Hi-hat

JSD Kit 4 Sticks/Hi-hat

Size: 3429 MB

Manufacturer: Zildjian

Size: 15"

Closed (tip + shank)

Quarter (tip + shank)

Half (tip + shank)

ThreeQ (tip + shank)

Open (tip + shank)

Pedal

• Zildjian 20" Custom Medium Ride

JSD Kit 4 Blast Sticks/Ride

Size: 1215 MB

Manufacturer: Zildjian

Size: 20"

Model: Custom Medium Ride

Hit, Edge

JSD Kit # 4 Sticks

• Zildjian 20" Custom Medium Ride

JSD Kit 4 Sticks/Ride

Size: 2858 MB

Manufacturer: Zildjian

Size: 20"

Model: Custom Medium Ride

Hit, Bell, Edge

• Kent Orange Sparkle (w/ Resonator)

JSD Kit 4 Sticks/Res Kick

Size: 1148 MB

Manufacturer: Kent

Size: 14x22"

Model: Orange Sparkle

Materials: 2-ply Maple (Bird's Eye)

Beater: Felt

Date: circa 1950's

Heads:

Beater: REMO Coated Ambassador

Front: REMO Coated Ambassador w/ hole

Hit

JSD Kit # 4 Sticks

- Tama Bell Brass

JSD Kit 4 Sticks/Snare 2 Brass Bell

Size: 2707 MB

Manufacturer: Tama

Size: 6.5x14"

Model: Bell Brass

Materials: Brass

Top Head : REMO CS Black Dot

Bottom Head: REMO Clear Snare Side Ambassador

Hit, Rim, Flam, Drag, HalfEdge, SS

JSD Kit # 8

- Sabian 14" AAX Metal Hihat

JSD Kit 8/Hihat

Size: 7541 MB

Manufacturer: Sabian

Size: 15"

Model: AAX Metal Hats

Closed (tip + shank)

Quarter (tip + shank)

Half (tip + shank)

ThreeQ (tip + shank)

Open (tip + shank)

Pedal

JSD Kit # 1• Ludwig Red Sparkle**JSD Kit 1/Kick**

Size: 988 MB

Manufacturer: Ludwig

Size: 14x22"

Model: Red Sparkle

Beater: Felt

Date: April 1966

Heads:

Beater: REMO Coated Ambassador

Front: REMO Coated Ambassador

Hit• Ludwig 70's Black Beauty**JSD Kit 1/Snare**

Size: 2457 MB

Manufacturer: Ludwig

Size: 6.5x14"

Model: 70's Black Beauty

Date: circa 1970

Top Head : REMO Coated Ambassador

Hit, Rim, Flam, Drag, HalfEdge, SS• Zildjian 20" Sizzle Cymbal (Ride)**JSD Kit 1/Ride**

Size: 1391 MB

Manufacturer: Zildjian

Size: 20"

Model: Sizzle Cymbal

Hit, Bell, BellT, Edge• Ludwig Red Sparkle**JSD Kit 1/Tom Hi**

Size: 509 MB

Manufacturer: Ludwig

Size: 9x13"

Model: Red Sparkle

Materials: Maple

Date: April 1966

Top Head : REMO Coated Ambassador

Bottom Head: REMO Coated Ambassador

Hit• Ludwig Red Sparkle**JSD Kit 1/Tom Floor**

Size: 698 MB

Manufacturer: Ludwig

Size: 16x16"

Model: Red Sparkle

Materials: Maple

Date: April 1966

Top Head : REMO Coated Ambassador

Bottom Head: REMO Coated Ambassador

Hit• Zildjian 14" Medium Concert Hat**JSD Kit 1/Hihat**

Size: 3275 MB

Manufacturer: Zildjian

Size: 14"

Model: Medium Concert Hat

Closed (tip + shank)***Quarter (tip + shank)******Half (tip + shank)******ThreeQ (tip + shank)******Open (tip + shank)******Pedal***

- Zildjian 18" Crash
JSD Kit 1/Crash 1
Size: 722 MB
Manufacturer: Zildjian
Size: 18"

Hit

- Zildjian 20" Crash
JSD Kit 1/Crash 2
Size: 541 MB
Manufacturer: Zildjian
Size: 20"

Hit

DVD2

JSD Kit # 3

- Ludwig Champagne Sparkle
JSD Kit 3/Kick
Size: 420 MB
Manufacturer: Ludwig
Size: 14x20"
Model: Champagne Sparkle
Beater: Felt
Date: May 1965
Heads:
Beater: REMO Coated Ambassador
Front: Ludwig Logo w/ Hole

Hit

- WFL Wood Snare
JSD Kit 3/Snare
Size: 2792 MB
Manufacturer: WFL
Size: 5x14"
Materials: Wood
Top Head : REMO old Coated Ambassador
Bottom Head: REMO Clear Ambassador

Hit, Rim, Flam, Drag, HalfEdge

- Ludwig Champagne Sparkle
JSD Kit 3/Tom Hi
Size: 621 MB
Manufacturer: Ludwig
Size: 8x12"
Model: Champagne Sparkle
Materials: Maple
Date: May 1965
Top Head : REMO Coated Ambassador
Bottom Head: REMO Clear Ambassador

Hit

- Ludwig Champagne Sparkle
JSD Kit 3/Tom Floor
Size: 667 MB
Manufacturer: Ludwig
Size: 14x14"
Model: Champagne Sparkle
Materials: Maple
Date: May 1965
Top Head : REMO Coated Ambassador
Bottom Head: REMO Clear Ambassador

Hit

- Zilco 14" Hat
JSD Kit 3/Hihat
Size: 4481 MB
Manufacturer: Zilco
Size: 14"

Closed (tip + shank)
Quarter (tip + shank)
Half (tip + shank)
ThreeQ (tip + shank)
Open (tip + shank)
Pedal

- Zildjian 18" Crash
JSD Kit 3/Crash 1
Size: 581 MB
Manufacturer: Zildjian
Size: 18"

Hit

- Zildjian 19" Crash
JSD Kit 3/Crash 2
Size: 898 MB
Manufacturer: Zildjian
Size: 19"

Hit, Bell

JSD Kit # 6

- Ludwig Sky Blue Pearl Kick
JSD Kit 6/Kick 1
Size: 760 MB
Manufacturer: Ludwig
Size: 16x24"
Model: Sky Blue Pearl
Beater: Felt
Date: circa 1976
Heads:
Beater: REMO Power Stroke 3 Clear
Front: REMO Coated Ambassador

Hit

- Ludwig Sky Blue Pearl Snare
JSD Kit 6/Snare
Size: 3092 MB
Manufacturer: Ludwig
Size: 6.5x14"
Model: Sky Blue Pearl
Date: circa 1976
Top Head : REMO Coated Ambassador

Hit, Rim, Flam, Drag, HalfEdge, SS

- Ludwig Sky Blue Pearl Hi Tom
JSD Kit 6/Tom Hi
Size: 886 MB
Manufacturer: Ludwig
Size: 9x13"
Model: Sky Blue Pearl
Materials: Maple
Date: circa 1976
Top Head : REMO Coated Ambassador
Bottom Head: REMO Coated Ambassador

Hit

- Ludwig Sky Blue Pearl Floor Tom

JSD Kit 6/Tom Floor

Size: 791 MB

Manufacturer: Ludwig

Size: 16x16"

Model: Sky Blue Pearl

Materials: Maple

Date: circa 1976

Top Head : REMO Coated Ambassador

Bottom Head: REMO Coated Ambassador

Hit

- Meinel Byzance 14" Dry Hats

JSD Kit 6/Hihat

Size: 4215 MB

Manufacturer: Meinel Byzance

Size: 14"

Model: Dry Hats

Closed (tip + shank)

Quarter (tip + shank)

Half (tip + shank)

ThreeQ (tip + shank)

Open (tip + shank)

Pedal

- Meinel Byzance 19" Thin Crash

JSD Kit 6/Crash 1

Size: 807 MB

Manufacturer: Meinel Byzance

Size: 19"

Model: Thin Crash

Hit

- Meinel Byzance 20" Medium Crash

JSD Kit 6/Crash 2

Size: 1055 MB

Manufacturer: Meinel Byzance

Size: 20"

Model: Medium Crash

Hit

DVD4

JSD Kit # 3

- Zildjian 20" Ride

JSD Kit 3/Ride

Size: 1958 MB

Manufacturer: Zildjian

Size: 20"

Hit, Bell, Edge

JSD Kit # 6

- Meinel Byzance 22" Ping Ride

JSD Kit 6/Ride

Size: 3382 MB

Manufacturer: Meinel Byzance

Size: 22"

Model: Ping Ride

Hit, Bell, Edge

- Slingerland Purple Satin Flame Kick

JSD Kit 6 Xtra/Kick 2

Size: 226 MB

Manufacturer: Ludwig

Size: 14x20"

Model: Purple Satin Flame

Beater: Felt

Date: circa 1970

Heads:

Beater: REMO Power Stroke 3 Clear

Front: REMO Coated Ambassador w/ Hole

Hit

Downloads & Bonus Material

Please login at www.platinumsamples.com for access to the download area for bonus Rock Drums hits and articulations.

Yamaha DXTREME^{III} Electronic Drums

Please check out the Yamaha DXTREME^{III} Electronic Drums brochure on DVD1 and visit their website at www.dtxperience.com



Yamaha is a registered trademark of Yamaha Corporation. All rights reserved.

Platinum Samples License Agreement

The digitally recorded Samples contained on the Platinum Samples DVDs or downloaded from www.platinumsamples.com are licensed, not sold to the end user by Platinum Samples. All samples are now and remain the property of Platinum Samples and are licensed to the end user only for use as part of a live or recorded musical performance. This license expressly forbids resale or other sale or distribution of these samples, either as they exist on the DVD, reformatted for use in a digital sampler or sample playback unit, or resynthesized or otherwise edited for use as sounds, samples, programs or patches in any medium, excepting musical performances, live or recorded. The end user cannot sell them or give them away. Any usage not specifically allowed by this license including but not limited to use as part of a musical performance by an entity who has not licensed a copy of the product will be prosecuted to the maximum possible extent under the law.

The purchase of a Platinum Samples Expansion Pack gives you the non-exclusive right to incorporate the sounds on that Expansion Pack in any sound and/or audiovisual production, such as a phonogram, soundtrack for a film, music production, television show, theatre show, musical, advertisement, website, videogame, or other media production.

You may not distribute, sell, rent, lease, sublicense, assign, or otherwise transfer any of the sounds except as incorporated in a production. You may not distribute the sounds independently of a production, or with any directions or instructions as to how the Sounds may be extracted from a production, or with any invitation, suggestion or authorization that the sounds may be extracted from a production.

You may not distribute the Samples, either in native format or reformatted, filtered, re-synthesized or otherwise edited, for use as sounds, multi-sounds, samples, multi-samples of as programs or patches in a sampler, sample playback unit, website or computer. The Sounds cannot be used as source playback from ROM or chip sets or embedded in any chip set.

Produced by: Rail Jon Rogut, Jim Scott
Recorded by: Jim Scott
Assistant Engineers: Kevin Dean, Josh Smith, Paul Figueroa
Drumming: Don Heffington, Bobby Jarzombek,
Chad Smith, Steve Ferrone
Drum Technicians: Mike Fasano, Lee Smith
Editing: Rail Jon Rogut
Recorded at: PLYRZ Studios & Sound City Studios
Programming: Paul Chana, Angus Hewlett,
SKoT McDonald, Andy Simper
Photography: Nigel Copp, Paul Figueroa

Jim would like to thank:

Rail Jon Rogut and Shivaun O'Brien for the opportunity, the vision and all the hard work. Don Heffington, Bobby Jarzombek, Chad Smith, and Steve Ferrone for hitting the drums so beautifully over and over and over and over. Kevin Dean, Josh Smith, and Paul Figueroa for the long hours and good ears. Mike Fasano and Lee Smith for knowing their stuff and being such cool hangs. To all the amazing, talented, patient and groovy drummers I've had the pleasure to work with over the years who helped me learn how to do this... Don Heffington, Chad Smith, Steve Ferrone, Jim Keltner, Jeff Pocar, Ringo Starr, Kenny Aronoff, Stan Lynch, Tyler Stewart, Brad Wilk, Chuck Bisquits, Matt Chamberlain, Josh Freese, Glenn Kotche, Manu Katche, Omar Hakim, David Raven, Abe Laboriel Jr., Donald Lindley, David Kemper, Vinnie Colaiuta, Phil Selway, JJ Johnson, Russ Kunkle, Dennis Edwards, Curt Bisquera, Michael Bland, Terry Bozzio, Jay Belarose, Stanton Moore, Phil Rudd, Michael Shreve, Marvin "Smitty" Smith, Jeff "Tain" Watts, Gil Sherone, Ralph Molina, Chet McCracken, Pete Thomas and all the other guys who worked just as hard... but aren't quite as famous; and finally to my beautiful wife, Carol, who supports me and gives me the freedom to do what I love to do.

Platinum Samples would also like to thank Jim Scott & Kevin Dean for the great job, Mike Fasano, Mike & Bridget O'Brien, Trini Alvarez, John Emrich, the incredible folks at REMO: Michelle & Bruce Jacoby, and the gang at FXpansion, especially Rhiannon Bankston-Thomas, SKoT McDonald, Paul Chana and Angus Hewlett.

BFD2 is a trademark of 

Platinum Samples feature  **drum heads - www.remo.com**

© 2009 Platinum Samples. All trademarks acknowledged. Mac is a trademark of Apple Computer, Inc. Windows XP and Windows Vista are trademarks of Microsoft Corporation. YouTube is a copyright of YouTube, LLC. Other trademarks mentioned are held by their respective owners.

Warning: The unauthorized reproduction or distribution of this copyrighted work is illegal. Criminal copyright infringement, including infringement without monetary gain, is investigated by the FBI and is punishable by up to 5 years in federal prison and a fine of \$250,000.