

RB 100 - ribbon microphone

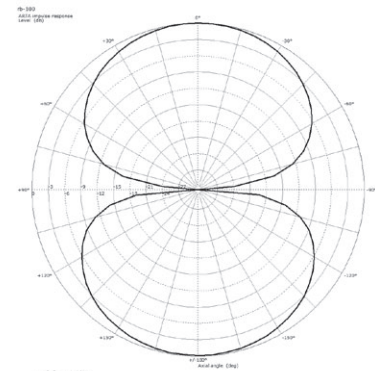
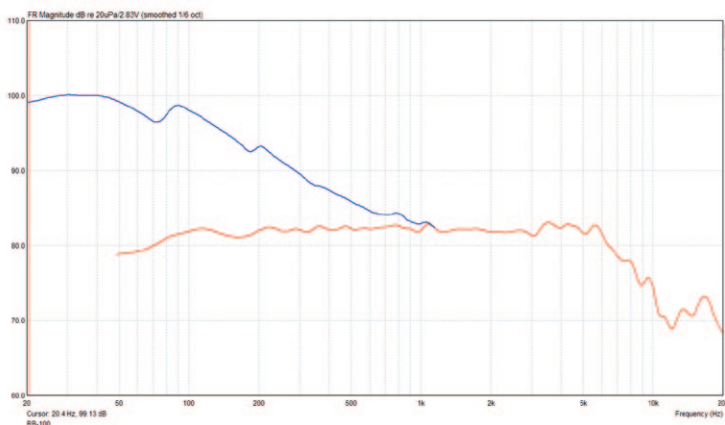
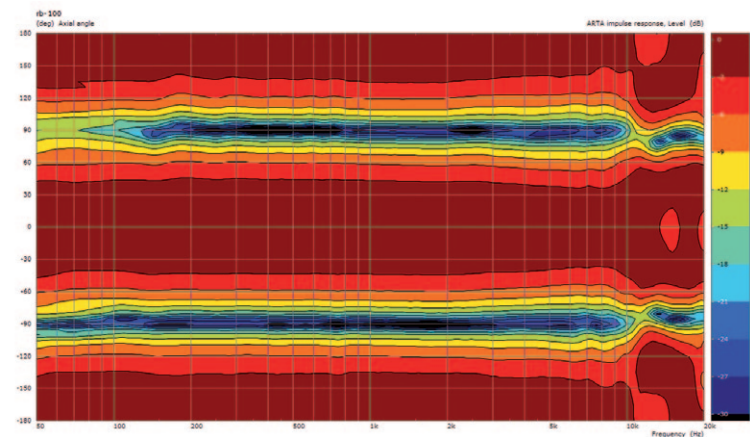
UK

✓ Includes suspension



Caution!

- ▶ Never remove the screen holding the capsule, as this may damage the microphone!
- ▶ Never drop the mic, as this may cause severe damage!
- ▶ When the microphone is not in use, take it out of its amp and put it in its case. Clean with damp cloth only.



Polar pattern @ 1 kHz

Connection	XLR
Transducer concept	ribbon
Directivity	figure-8
Field sensitivity [mV/ Pa]	1.6
Field sensitivity [dB re 1V/ Pa]	-56.2
Equivalent noise level [dB(A)]	17.9
Signal-to-noise ratio [dB(A)]	76.1
Maximum SPL [dB SPL @ 1% THD]	139
Electric impedance [ohm @ 1 kHz]	400
Frequency response 0.1 m -10 dB	20 - 12.000 Hz

Musikhaus Thomann e. K.
Treppendorf 30 • 96138 Burgebrach
Germany • www.thomann.de

the
t.bone