

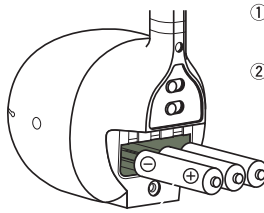
# INSTRUCTION MANUAL - OTAMATONE CLASSIC

## Step 1 - Set up the Otamatone for playing.

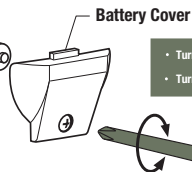
### How to change batteries:

Required batteries: AAA x 3

- Test batteries included.
- Alkaline batteries are recommended



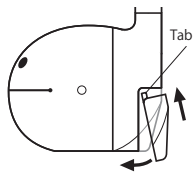
- 1 Open the battery cover with the right size plus (+) screwdriver.
- 2 Place new batteries so that the (+) and (-) sides are in the right direction.



- Turn counterclockwise to open.
- Turn clockwise to close

### AAA Batteries

- Place three new batteries facing the same way.
- (+) and (-) sides are indicated inside the box

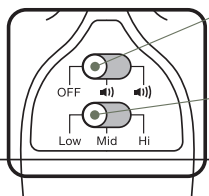


- 3 Attach the cover as shown and push to close.
- 4 Tighten the screw.

Change the batteries when the sound is softer and intermittent.

Hint to make the batteries last:  
Turn the switch off after playing.

### Selection of Volume and Octave:



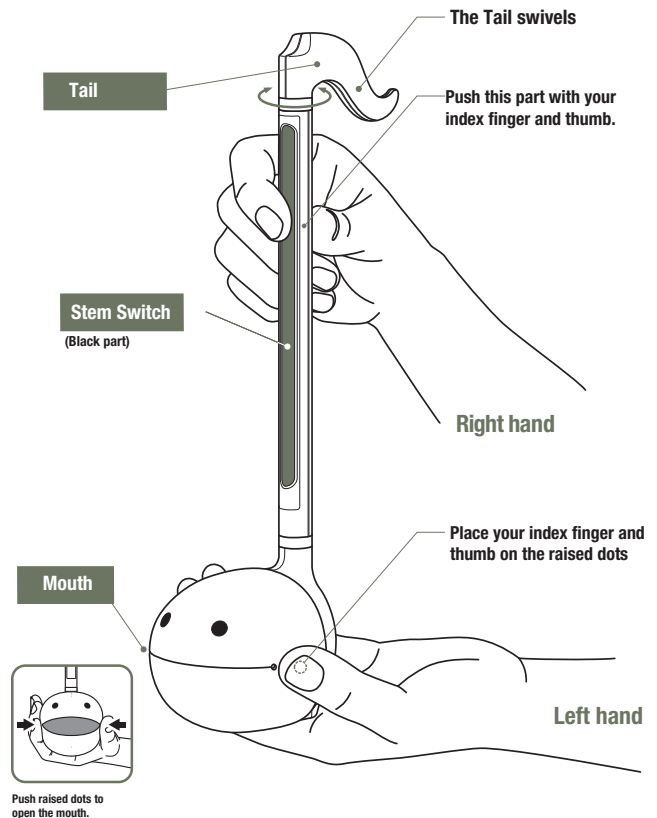
Volume Switch: Choose soft or loud

OFF / Soft / Loud

Octave Switch: Set to the desired level.

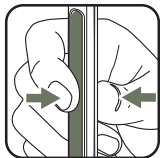
Low / Medium / Hi

## Step 2 - Hold the Otamatone



## Step 3 - Let's make some sounds!

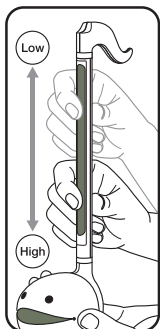
### Push Technique:



Push the Stem Switch anywhere!  
This will make "mmm" sound.  
Push different places and the sound will change too.

Hint: Push the Stem Switch with your index finger and thumb

### Slide Technique:



Push and hold the Stem Switch.  
Slide the fingers up and down.  
This will make "peooow" sound.

Hint: Push a bit harder and slide to make sure the sound does not break. After mastering the technique, you can adjust the pressure.

Change the Octave switch to try a different pitch.

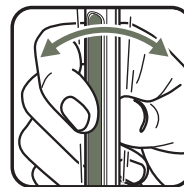
### Mouth Technique:



While pushing the Stem Switch, open and close the mouth.  
The sound changes from "woo" to "wah."  
Repeat this to make "wah wah wah."

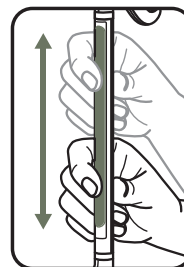
Hint: This will vary the sound.  
The opening and the closing of the mouth makes everyone happy!

## Step 4 - Try different techniques!



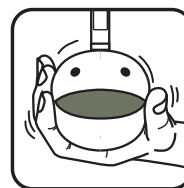
### Vibrato:

A tremulous or pulsating effect produced in an instrumental or vocal tone. Vibrate the Stem while doing the Push technique.



### Portamento:

A continuous gliding movement from one tone to another. Play songs as you slide your fingers. It sounds like a grass whistle.



### Wah-wah:

A musical special effect to produce voice-like tones. Open and close the mouth while pushing the Stem Switch

For more informations and other Otamatone models, visit the Thomann Website

<https://www.thomann.de/de/otamatone.html>