

**M-AUDIO**

# Pro Tools Recording Studio

User Guide

---

## Introduction

Pro Tools® Recording Studio has what you need for a professional-quality recording setup on the go. With an XLR microphone input and a TRS line/instrument input, the included Fast Track USB™ audio interface gives you full 24-bit digital audio; and the included Pro Tools® M-Powered™ Essential software is your introduction to the world-standard platform in music production software.

---

## What's in the Box

Your Pro Tools Recording Studio package contains the following:

- ▶ Fast Track USB Audio Interface
  - ▶ Printed User Guide
  - ▶ Pro Tools M-Powered Essential DVD
  - ▶ Pro Tools M-Powered Essential Quick Setup
  - ▶ USB cable
- 

## Fast Track USB Audio Interface Features

- ▶ Balanced XLR mic-level input with high-quality mic preamp providing 50dB of gain
- ▶ Balanced 1/4" TRS line/instrument input with Line/Instrument level switch
- ▶ Signal and Peak LED input meters
- ▶ Two line-level RCA outputs
- ▶ USB powered (no power supply needed)
- ▶ Qualified audio interface for Pro Tools M-Powered and M-Powered Essential

## Installing Fast Track USB

To use M-Audio Fast Track USB with Pro Tools M-Powered Essential software, follow the steps in the printed Pro Tools M-Powered Essential Quick Setup instructions. These instructions include the basic steps for installing drivers for M-Audio Fast Track USB. Detailed information about installing M-Audio Fast Track USB drivers is also provided in the next section.

To use M-Audio Fast Track USB with 3rd-party music recording software, you still need to install the Fast Track USB drivers. See the following installation steps.

For best results, Fast Track USB drivers and hardware should be installed first, and your recording software second (unless recording software already exists on the computer).

### Installation Instructions for Windows XP and Vista

**PLEASE NOTE:** Make sure Fast Track USB is not connected to your computer when beginning the installation. The following instructions will indicate when you should connect the interface to your computer.

1. Install the Fast Track USB drivers by doing one of the following:

- Download the latest Fast Track USB drivers from the Support > Drivers page at [www.m-audio.com](http://www.m-audio.com). Once you have saved the installer to your computer, double-click the file to start the installation process.

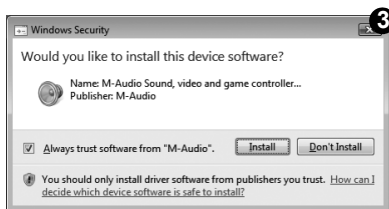
- OR -

- If you do not have Internet access and are installing drivers from the included disc, the computer will automatically display the interactive install screen **1** when the disc is inserted. If your computer fails to launch this application, you can manually start it by clicking on Start > My Computer\* > Pro Tools M-Powered Essential DVD > setup.exe. Next, click "Install Fast Track USB Driver."

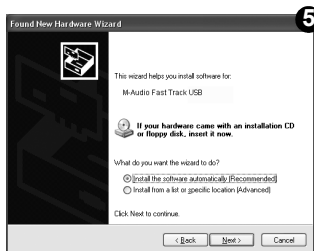
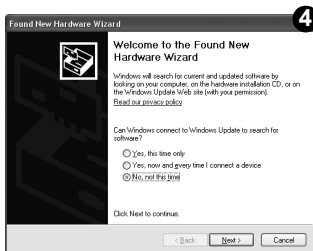


*\*If you are using Windows Vista, "My Computer" will be labeled "Computer" in this step.*

2. Follow the driver installer's on-screen instructions. At various points in this installation process, you may be notified that the driver being installed has not passed Windows Logo Testing, or asked whether the program you wish to run is a trusted application. Click "Continue Anyway" **2** (Windows XP) or "Install" **3** (Windows Vista) to proceed with the installation.



3. Once the installer has completed, click "Finish."
4. Connect Fast Track USB to an available USB port on your computer. If you are using Windows Vista, your Fast Track USB installation is now complete. If you are using Windows XP, proceed with steps 5-7.
5. Windows XP will identify the interface and ask if you want to search the Internet for a driver. Select "No, not this time" and press "Next." **4**
6. Windows XP will display a Found New Hardware Wizard dialog asking what you want the wizard to do. Choose "Install the software automatically" and click "Next." **5**



7. Once the Wizard has completed, click "Finish."  
If you are presented with another Found New Hardware Wizard dialog, repeat steps 5-7.

## Installation Instructions for Mac OS X

**PLEASE NOTE:** Make sure Fast Track USB is not connected to your computer when beginning the installation. The following instructions will indicate when you should connect the interface to your computer.

1. Install the Fast Track USB drivers by doing one of the following:
  - If you have Internet access, download the latest Fast Track USB drivers from the Support > Drivers page at [www.m-audio.com](http://www.m-audio.com). This is highly recommended as it provides you with the newest drivers available. The downloaded file should automatically mount and display its contents. If this file does not automatically mount after it has finished downloading, click on the file from the downloads stack in the dock to display its contents. Next, double-click the installer application.

- or -

- If you do not have Internet access and are installing drivers from the Pro Tools M-Powered Essential DVD, a DVD-ROM icon will appear on your desktop once the disc is inserted into your computer. Double-click this icon to view the contents of the disc. In the Drivers folder, double-click the driver installer (.dmg) file for FastTrack\_OSX.
2. Follow the driver installer's on-screen instructions. During installation, Mac OS X will ask you to enter your user name and password. Enter this information and click OK to confirm. If you have not configured a password for your computer, leave the password field blank and click OK. If you are not the computer's owner, ask the owner or your Administrator for this information.



3. When the installer has completed, click "Restart." Your computer will reboot automatically.
4. After your computer has finished starting up, connect Fast Track USB to an available USB port on your computer. Fast Track USB is now installed and ready to be used.

**NOTE:**

*In order to hear the audio signal produced by Fast Track USB, you must either:*

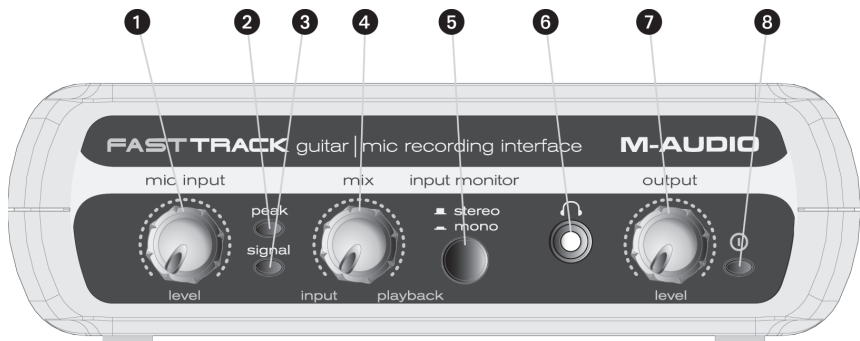
1. Connect the two RCA outputs (located on the Fast Track USB rear panel) to powered monitors, an amplifier, or a mixer.

*or*

2. Connect headphones to the headphone output, located on the front panel of Fast Track USB.

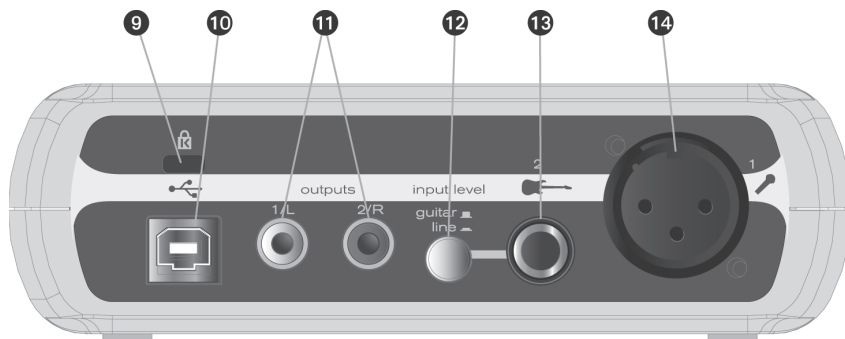
# Fast Track USB Audio Interface

## Front Panel Controls



- 1 **Mic Input Level** - Adjusts the gain level for the rear-panel XLR microphone input **(14)**.
- 2 **Peak LED (Mic)** - Indicates presence of peak input level from the XLR microphone input. Lights when input signal approaches -3dB before overload.
- 3 **Signal LED (Mic)** - Indicates presence of input signal from the XLR microphone input. Lights when input signal level approaches -40dB.
- 4 **Input/Playback Mix Control** - Controls the ratio of input signal to playback signal from your recording software. (When you record, you should mute the track in your audio software that you are recording on. Otherwise, you will hear the analog input signal AND latency-delayed recorded signal.)
- 5 **Input Monitor Button (Stereo/Mono)** - When pressed, this button sums the input signals to mono for direct monitoring.
- 6 **Headphone Output** - Standard 1/8" stereo headphone output.
- 7 **Output Level** - Adjusts overall output volume level. This control affects both the rear panel Line Outputs **(11)** and the Headphone Output **(6)**.
- 8 **Power LED** - Illuminates when the unit is powered on.

## Rear Panel Controls



9. **Kensington™ Lock Connector** - Connect a standard laptop-style cable locking device here to protect your Fast Track USB from theft or accidental breakage.
10. **USB Connector** - Connect the included USB cable here, and connect the other end to your computer's USB port.
11. **Line Outputs** - Left and Right stereo outputs. Connect these outputs to powered monitors such as the M-Audio AV 40's, or to the inputs of your stereo amplifier or receiver.
12. **Input Level Button (Guitar/Line)** - Input level selector for the 1/4" TRS input (**13**). When connecting a balanced or unbalanced line level input here, the button should be set to the *Line* position. When connecting an instrument, the button should be set to the *Guitar* position.
13. **Guitar/Line Input** - TRS 1/4" input for line/instrument level input sources. The input level is determined by the Input Level Button (**12**).
14. **Mic Input** - Balanced XLR input for connecting a dynamic microphone.



## The Software Control Panel

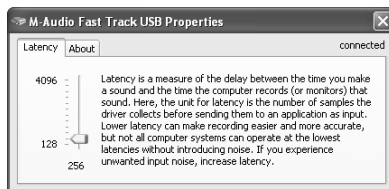
**Windows XP/Vista users:** A small M-Audio logo  will be placed in the system tray, generally located at the bottom of your Windows desktop. Double-click this icon to open the Control Panel.

**Mac OS X users:** The Fast Track Control Panel can be found in System Preferences, under "Other."

**Note:** The Software Control Panel is available only after the Fast Track USB driver software has been installed. It will not appear if Fast Track USB is being used as a *class compliant* device (this means using the device with the drivers already built into the computer's operating system). Also note that the Fast Track USB driver software must be installed and the device connected in order for Pro Tools M-Powered Essential to function.

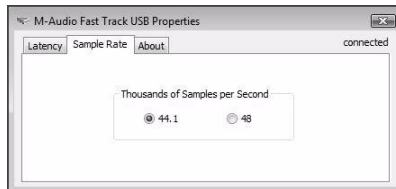
### Latency Tab (Windows XP and Vista)

Latency is defined as the time it takes for your input signal to pass through your audio software and appear at the outputs. This latency can result in a delay that is undesirable when overdubbing to existing tracks. The slider lets you select the size of the buffer in samples. Smaller buffer sizes result in lower latency, but may not function well with slower systems, causing clicks, pops and dropouts in the audio playback. The default buffer size is 256 samples. If you are experiencing clicks and pops in your audio, try increasing the buffer size. On Macintosh systems, the buffer size is normally adjusted within your audio recording software.



### Sample Rate Tab (Windows Vista Only)

This page allows you to choose a sample rate of 44.1kHz (audio CD format) or 48kHz (used in video). This is provided in order for MME applications in Vista to have access to both of the supported sample rates. When using Pro Tools M-Powered Essential, as well as ASIO and WDM applications, the sample rate can be changed within the recording software, regardless of the setting on this tab.



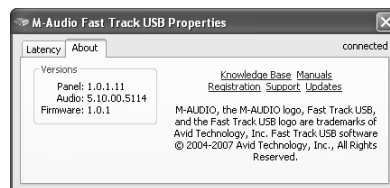
## Performance Tab (Macintosh Only)

This page allows you to choose a sample bit depth of 16-bit or 24-bit. The high quality 24-bit sample bit depth is selected by default. On Windows systems, the sample bit depth is normally adjusted within your audio recording software.



## About Tab (All Systems)

This page contains information on your hardware and current driver software versions. This information may be helpful should you ever have the occasion to call for technical support. Clicking the links on this page will take you to useful pages on the M-Audio website.



---

## Audio Software Configuration

The included Pro Tools M-Powered Essential software automatically selects and configures M-Audio Fast Track USB for audio recording. If you are planning to use a 3rd party recording software, you will need to select M-Audio Fast Track USB as the audio input and output device for the software and its tracks. Please refer to the documentation for your recording software for more information on audio device configuration.

## Recording with Fast Track USB

### Recording using the Microphone Input

1. Turn the Microphone Gain knob fully counter-clockwise.
2. Connect a microphone to the Microphone Input on the rear panel using an XLR cable.
3. While the sound source is playing at its loudest levels, slowly turn the Mic Gain knob clockwise until the red clip indicator begins to illuminate. Then, turn the knob counter-clockwise until the clip indicator no longer illuminates. At this point, you should be ready to record with the optimum gain setting.
4. In your recording software, select the Fast Track USB Microphone Input as the input source for a mono track. You can select the Microphone Input in your recording software by selecting the first (left) input of Fast Track USB.

### Recording using the Guitar/Line Input

1. Use a standard 1/4" instrument cable to connect an electric guitar, bass, or other instrument to the Guitar/Line Input on the rear panel.
2. Make sure the rear panel Input Level Button is in the Guitar position (unless you are recording from a line-level source such as a synthesizer or audio mixer).
3. In your recording software, select the Fast Track USB Guitar/Line Input as the input source for a mono track. You can select the Guitar/Line Input in your recording software by selecting the second (right) input of Fast Track USB.

**Note:** *If the Microphone Input is not being used, turn the Mic Input Level knob fully counter-clockwise to maintain the best possible signal-to-noise ratio. The Mic Input Level knob does not affect the level of the Guitar/Line Input.*

## Adjusting the Output Level

Connect the Fast Track USB Line Outputs (on the back of the interface) to a mixing console, amplifier or powered monitors. The Line Outputs and the Headphone Output are both controlled by the front-panel Output knob.

**Note:** When recording with a microphone, headphones should be used and speakers should be deactivated in order to prevent feedback.

## Using the Input/Playback Mix Control

Latency is the amount of time it takes for your microphone or instrument signals to pass through the computer (and your audio software) and become available at the Line and Headphone Outputs. This delay is usually quite small and is measured in milliseconds, but it may be large enough to distract a performer who wishes to record while monitoring through software. Fast Track USB provides a solution to this with latency-free input monitoring that is adjustable via the Input/Playback Mix Control.

When the Input/Playback Mix Control knob is turned to the fully counter-clockwise position (labeled "input"), only the Microphone and Guitar/Line Inputs will be heard. When the knob is turned to the fully clockwise position (labeled "playback"), only the sound from your audio software will be heard. When the Input/Playback Mix Control knob is set to the center position (labeled "mix"), an equal mix of the Fast Track USB inputs and the software output will be heard.

When monitoring your input using the Input/Playback Mix Control, make sure that your audio software is not outputting signal from the track you are currently recording. This would cause "double-monitoring," resulting in an undesired "phasing" or "slap-back" echo. Consult the documentation for your audio application regarding disabling software monitoring.

## Using the Input Monitor Button

When the Input Monitor Button is in the Stereo position, sound from the Microphone Input will be heard in the left side of your headphones or monitors, and sound from the Guitar/Line Input will be heard in the right side. When the Input Monitor Button is in the Mono position, sound from the Microphone and Guitar/Line Inputs will be heard in the middle of the stereo image (mixed equally in the left and right channels). Note that the Input/Playback Mix Control and the Input Monitor Button only affect what you hear through your headphones or speakers and do not affect the inputs of your audio software in any way. Fast Track USB always sends separate microphone and instrument signals to your recording software without blending them, even though they may sound blended while monitoring.

---

## Additional Information and Support

Documentation for the included Pro Tools M-Powered Essential software can be accessed via the application's Help menu. Additional installation and setup instructions can also be found in the included Pro Tools M-Powered Essential Quick Setup.

### **Before Updating Your Mac or Windows System:**

Please check the M-Audio driver download page at [www.m-audio.com/drivers](http://www.m-audio.com/drivers) for the availability of an updated driver before you decide to install Microsoft or Apple operating system updates.

Before new M-Audio device drivers are released, they are tested for use with operating system versions that are available at that time. When updates for an operating system are released, all M-Audio device drivers have to be re-tested and possibly updated to ensure proper operation.

M-Audio recommends refraining from installing operating system updates until a driver has been posted to the M-Audio website for that specific operating system. The M-Audio website ([www.m-audio.com](http://www.m-audio.com)) contains the latest drivers and program updates as well as useful links to news stories, FAQs, and technical support. We recommend checking this site regularly to ensure you have the latest drivers and most up-to-date information about your M-Audio products.

# Warranty

## Warranty Terms

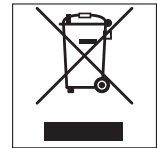
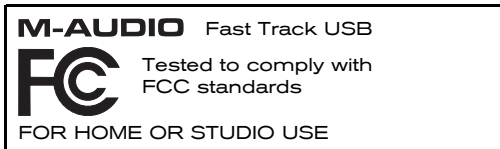
M-Audio warrants products to be free from defects in materials and workmanship, under normal use and provided that the product is owned by the original, registered user. Visit [www.m-audio.com/warranty](http://www.m-audio.com/warranty) for terms and limitations applying to your specific product.

## Warranty Registration

Immediately registering your new M-Audio product entitles you to full warranty coverage and helps M-Audio develop and manufacture the finest quality products available. Register online at [www.m-audio.com/register](http://www.m-audio.com/register) to receive FREE product updates and for the chance to win M-Audio giveaways.

### Documentation Feedback

At M-Audio, we are always looking for ways to improve our documentation. If you have comments, corrections, or suggestions regarding our documentation, email us at [publications@m-audio.com](mailto:publications@m-audio.com).



**WARNING:** This product contains chemicals, including lead, known to the State of California to cause cancer, and birth defects or other reproductive harm. ***Wash hands after handling.***

© 2009 Avid Technology, Inc. All rights reserved. Product features, specifications, system requirements and availability are subject to change without notice. Avid, M-Audio, Pro Tools, M-Powered, AV40 and Fast Track USB are either trademarks or registered trademarks of Avid Technology, Inc. All other trademarks contained herein are the property of their respective owners.

**M-AUDIO**<sup>®</sup>  
A part of *Avid*

[www.m-audio.com](http://www.m-audio.com)

**M-AUDIO**

5795 Martin Road  
Irwindale, CA 91706, USA

**TECHNICAL SUPPORT**

Visit the M-Audio Online Support Center  
at [www.m-audio.com/support](http://www.m-audio.com/support)

**PRODUCT INFORMATION**

For company and product information  
visit us on the web at [www.m-audio.com](http://www.m-audio.com)